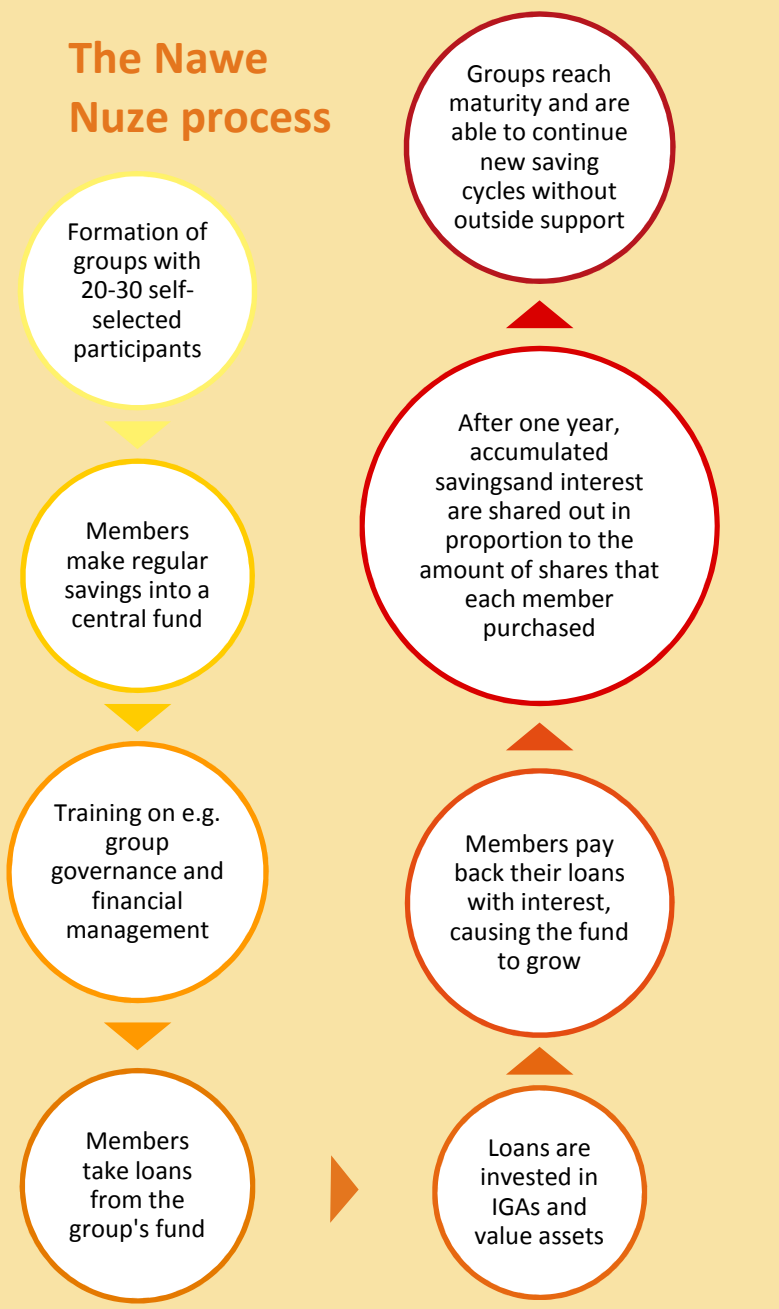


"Nawe Nuze"

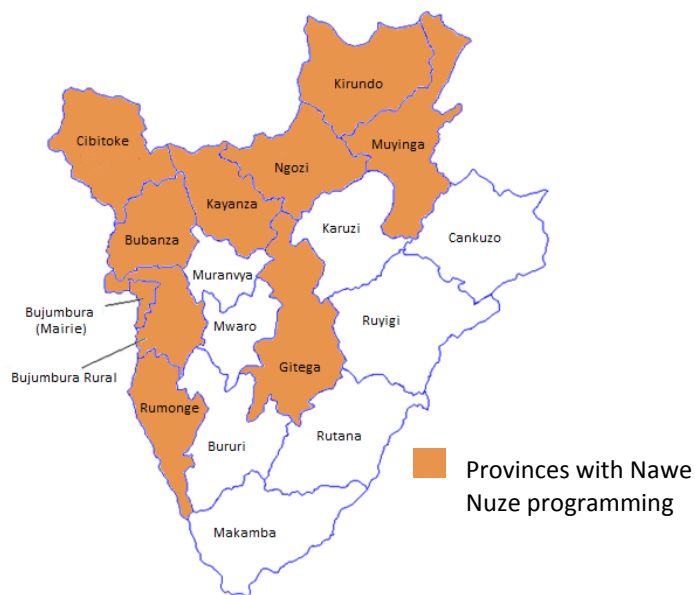
CARE Burundi's Experiences in Village Savings and Loans Programming



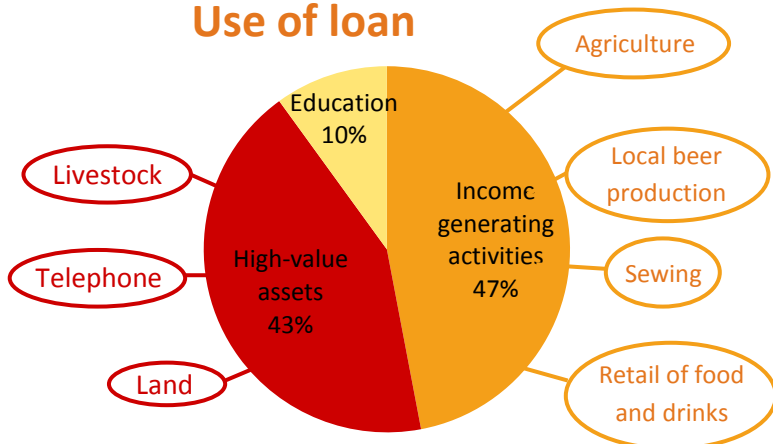
The Nawe Nuze process



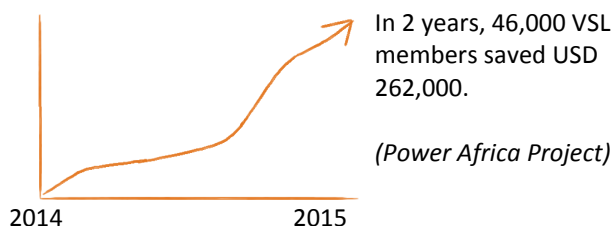
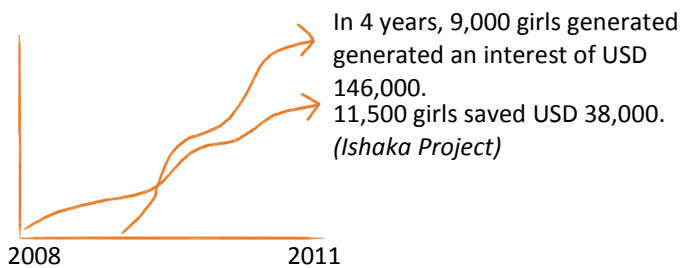
In Kirundi, "Nawe Nuze" means "You too, welcome". It is the local name for CARE Burundi's Village Savings and Loans model.



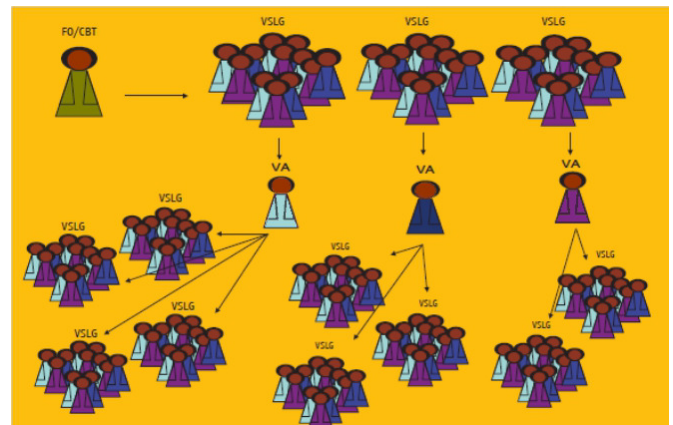
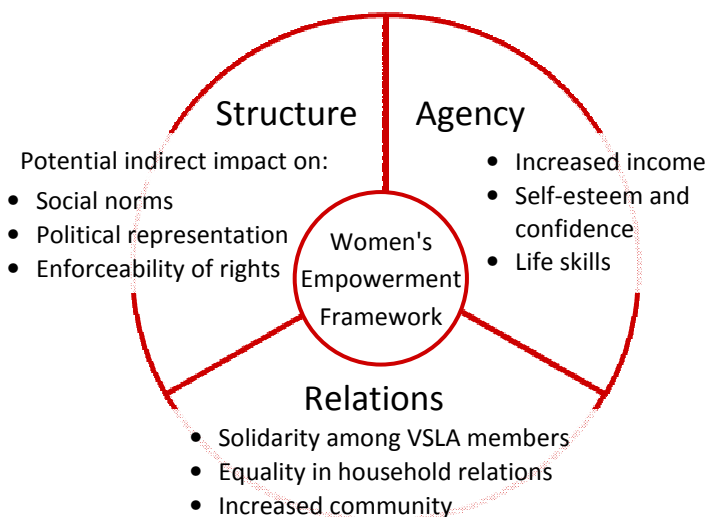
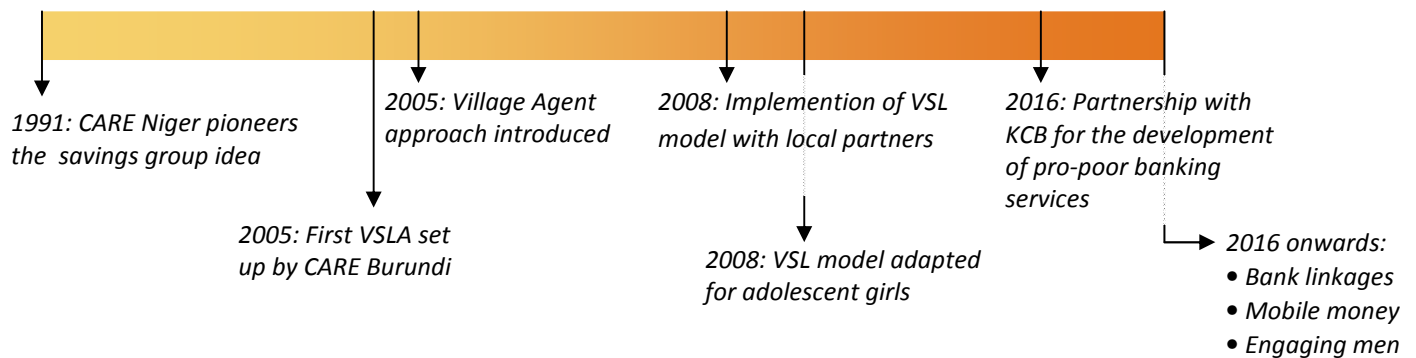
Use of loan



Source: Power Africa Annual report 2015



Development of the Nawe Nuze model



The Village Agent (VA) approach: Some members are trained as trainers and subsequently train other groups, allowing many individuals to be reached at low costs. (Figure adapted from: CARE Rwanda, SAFI Technical Brief 3)

Innovation: VSL for adolescent girls

Traditionally, VLS programming has mostly focused on adult women. CARE Burundi, recognizing the vulnerable position of many adolescent girls, started in 2008 with the implementation of Ishaka project, piloting the VSL model with this specific impact group.

A number of adaptations were made to the model to suit the specific situation of the adolescent girls:

- Training on life skills, sexual and reproductive health and human rights to help adolescent girls deal with challenges of low confidence, negative reactions from their environment on their economic empowerment, risks of unwanted pregnancy, HIV and/or early marriage, etc.
- Include parents and teachers to ensure their support to the girls.
- Adapt activities based on whether girls are in or out of school, and whether they live in an urban or a rural setting.

For more info: <http://www.care.org/ishaka-toolkit> or search for CARE Ishaka on YouTube

300,000 Nawe Nuze members have been supported by CARE Burundi so far

Way forward

Future strengthening of the Nawe Nuze model will focus on:

- Increased attention for addressing socio-cultural barriers and engagement of men and boys
- Investment in transformation of agricultural products
- Access to formal financial services

Our donors

CARE Burundi's VSL programming has been made possible by the kind contributions of: Austrian Development Agency, Bill and Melinda Gates Foundation, Dutch Ministry of Foreign Affairs, Embassy of the Kingdom of the Netherlands, European Commission, H&M Conscious Foundation, Master Card, Nike Foundation, and Norwegian Agency for Development Cooperation.

For more information, please contact: Laurent Uwumuremyi, CARE Burundi's Country Director, Laurent.Uwumuremyi@care.org or Nicedore Nkurunziza, CARE Burundi's Economic Empowerment & VSLA Advisor, Nicedore.Nkurunziza@care.org

Version: June 2016